

# DM1100 C EDGE ROUNDING MACHINE



## GENERAL DESCRIPTION:

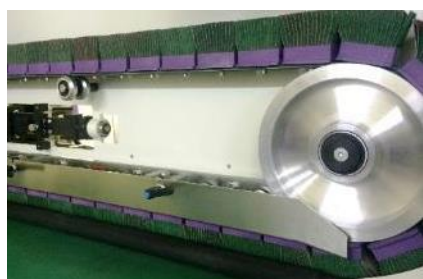
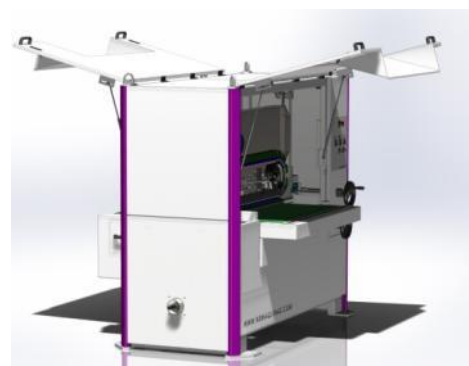
DM1100 C removes sharp edges on inside and outside contours of stainless steel, steel and aluminium parts cut by laser, punching or shearing.

This edge rounding machine can even work parts as small as 50x50mm.

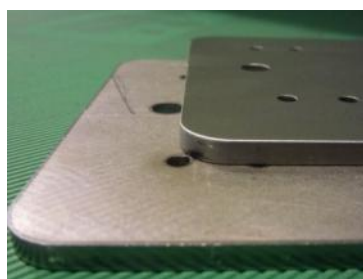
DM1100 C has a double top cross belt head which performs edge rounding leaving soft and clean edges on the entire metal surface.

## TECHNICAL DATA:

Working capacity (mm)	1100x50 (max. width x thickness)
Feeding speed (m/min.)	0.6 – 3.2
Cross belts speed (m/s)	8 or 2 - 8
No. abrasive blocks	2x 42
Cross belts motor (kW)	2x 3
Consumption (A)	13
Dimensions approx. (mm)	2270x1560x1940
Weight approx. (kg)	1200



2 cross belts operating in opposite directions



Before and after sharp edge removal on laser cut steel parts



Small parts as small as 30mm can be edge rounded