

DM1600 C EDGE ROUNDING MACHINE



GENERAL DESCRIPTION:

DM1600 C removes sharp edges on inside and outside contours of stainless steel, steel and aluminium parts cut by laser, punching or shearing.

This edge rounding machine can even work parts as small as 50x50mm.

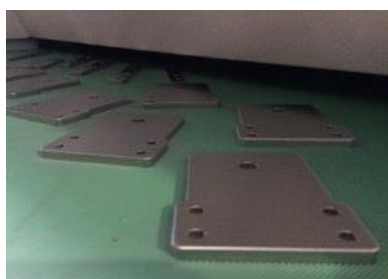
This model counts with large conveyor belt with 1600mm width which enables the work of large metal sheets and also an higher production speed on smaller parts.

TECHNICAL DATA:

Working capacity (mm)	1600x50 (max. width x thickness)
Feeding speed (m/min.)	0.6 – 3.2
Cross belts speed (m/s)	8 or 2 - 8
No. abrasive blocks	2x 57
Cross belts motor (kW)	2x 4
Consumption (A)	13
Dimensions approx. (mm)	2730x1740x1940
Weight approx. (kg)	1790



Feeding multiple parts on DM1600 C



After edge rounding



Small stainless steel parts edge rounding